

**NOTE:**

By default, N7 Z370 has **SATA** mode set to **Intel® Rapid Storage Technology(RST)**. If you have a drive with Microsoft® Windows 10 Operating System already installed under AHCI mode, you will need to switch to AHCI to boot directly to your installation. Additionally, if you have installed Windows using Legacy boot mode, you will need to change Boot to “Windows 7 or other OS” to enable Legacy boot.

**BIOS Configuration****Switching to AHCI:**

*Advanced > Advanced > SATA > SATA Mode > [Intel RST] or [AHCI].*

**Changing to Legacy boot:**

*Advanced > Boot > Operating system select > [Windows 8.x / 10] or [Windows 7 or other OS].*

For Windows 10 installation via DVD, proceed directly to section II.

- I. Preparing your Windows 10 installation boot USB.
- II. Installing Windows 10 with your Boot Media.

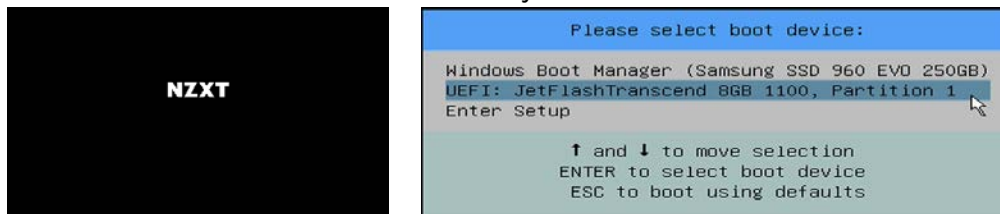
**I. Preparing your Windows 10 Installation USB Drive****NOTE:**

This process requires a Windows PC and a USB flash drive with at least 8GB of free space. You will need to format this drive during the process so be sure to back up your files before continuing.

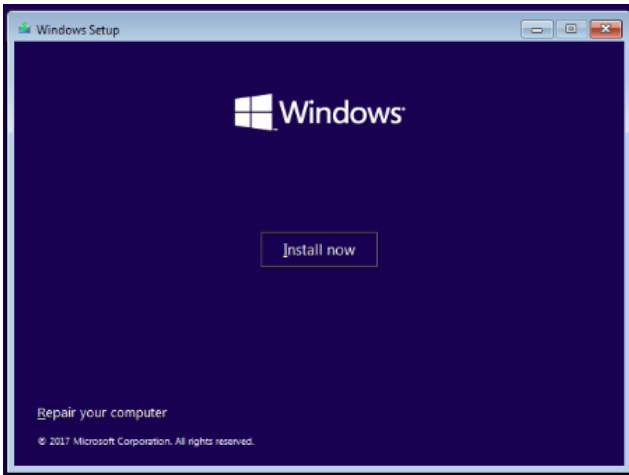
1. Head to Microsoft’s *Download Windows 10* webpage by visiting: <https://www.microsoft.com/en-us/software-download/windows10>
2. Click on “Download tool now” and save it to your system.
3. Run “MediaCreationTool.exe” and follow the instructions to complete the Windows 10 Installation boot disk creation.
4. Once created, you may need to load additional drivers to the USB flash drive to aid in installation. **For installation onto NVME drives**, be sure to download **Intel RST drivers** which can be found on the N7 Z370 product page under the Download section. Visit us at [www.nzxt.com](http://www.nzxt.com).

**II. Installing Windows 10**

1. Connect the Windows 10 Installation USB or insert the Windows 10 DVD.
2. Turn on your system and press F7 during boot to load the boot menu if the drive isn’t loaded automatically.

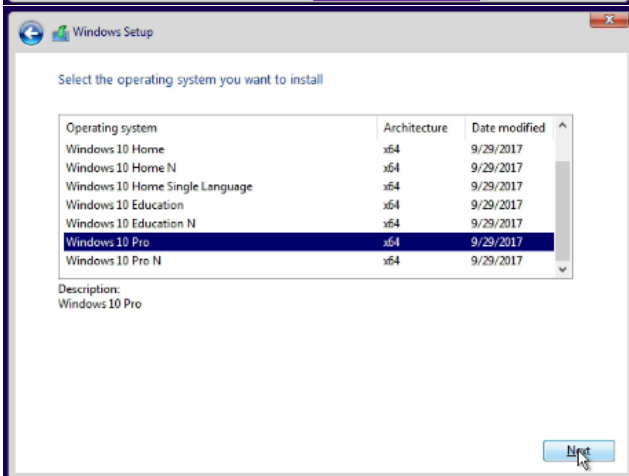
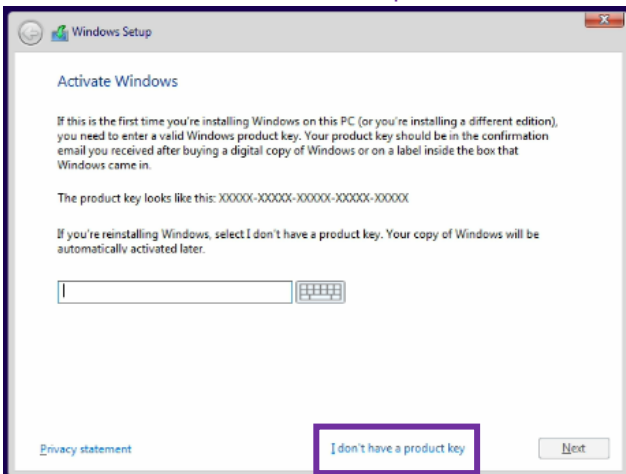


- The Windows 10 installer will load. Click Install Now to continue.

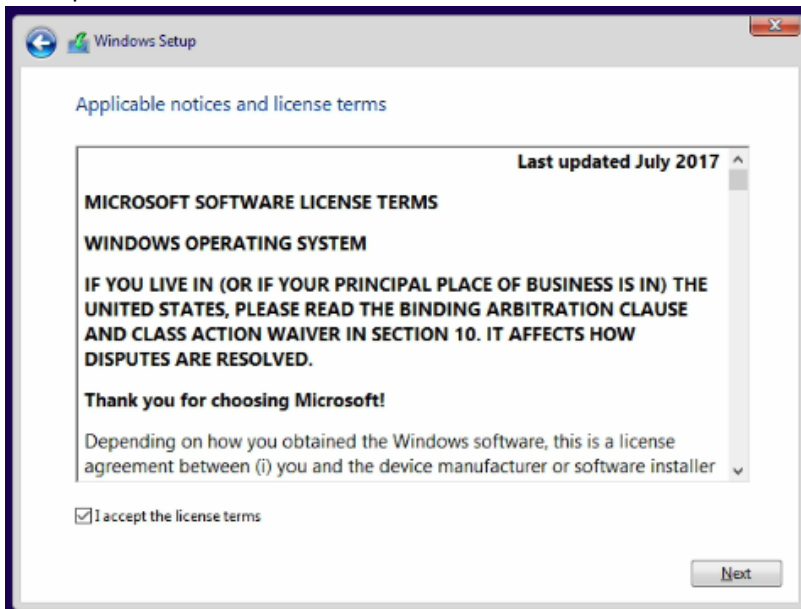


- Enter your Windows 10 Activation Key when prompted. This will automatically install the corresponding version of Windows 10. If you don't have a key, click "I don't have a product key" and select the version of Windows 10 you wish to install.

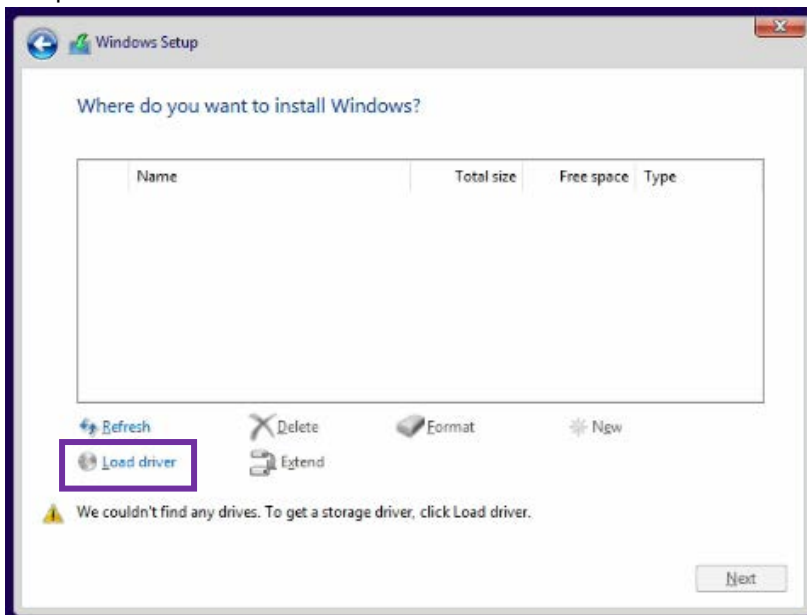
Note: Microsoft will require Activation for full OS functionality.



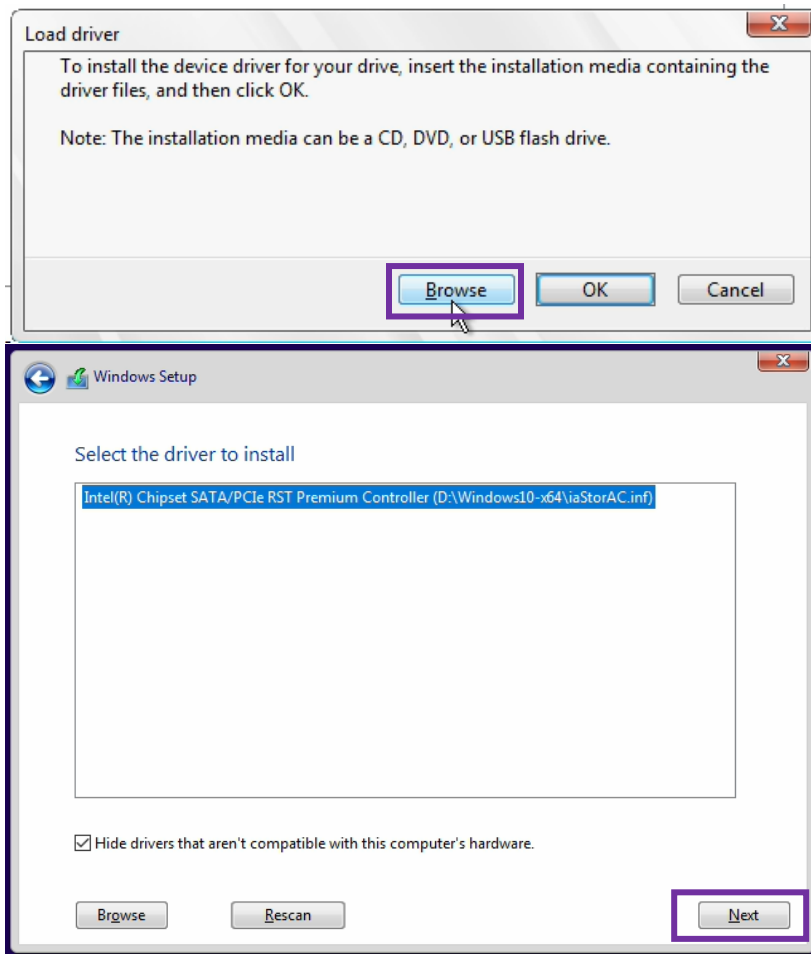
5. Accept Microsoft’s Software License Terms.



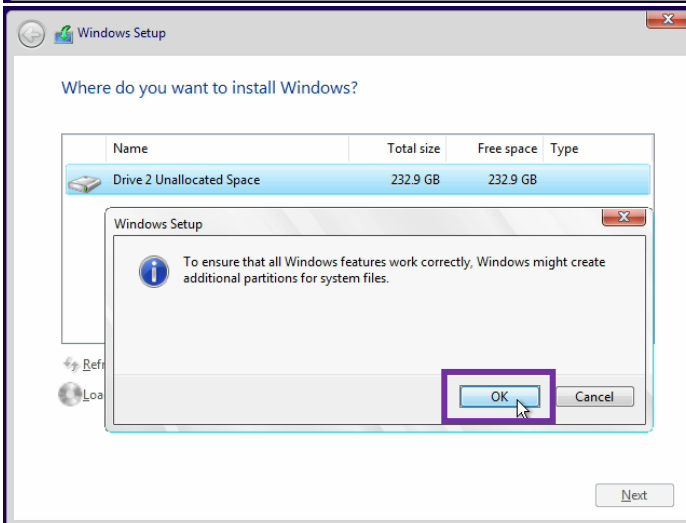
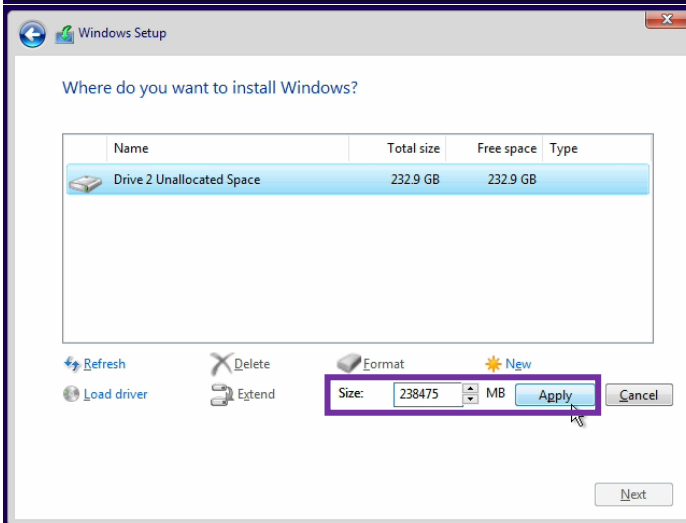
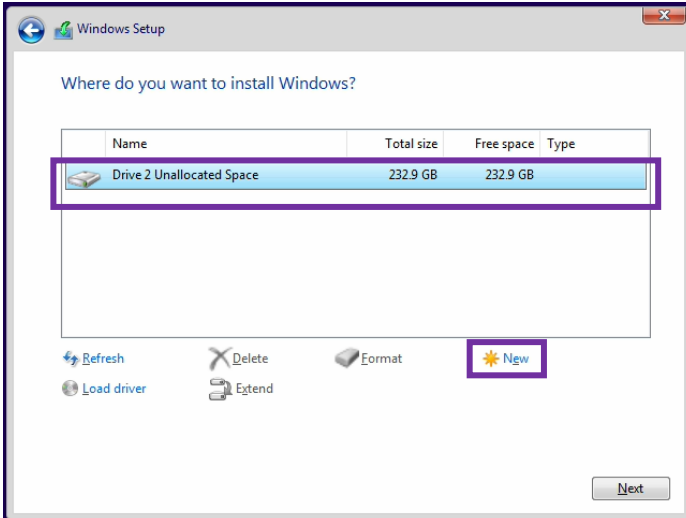
6. If your destination drive is not listed, click on “Load driver”. Proceed to step 8 if listed.



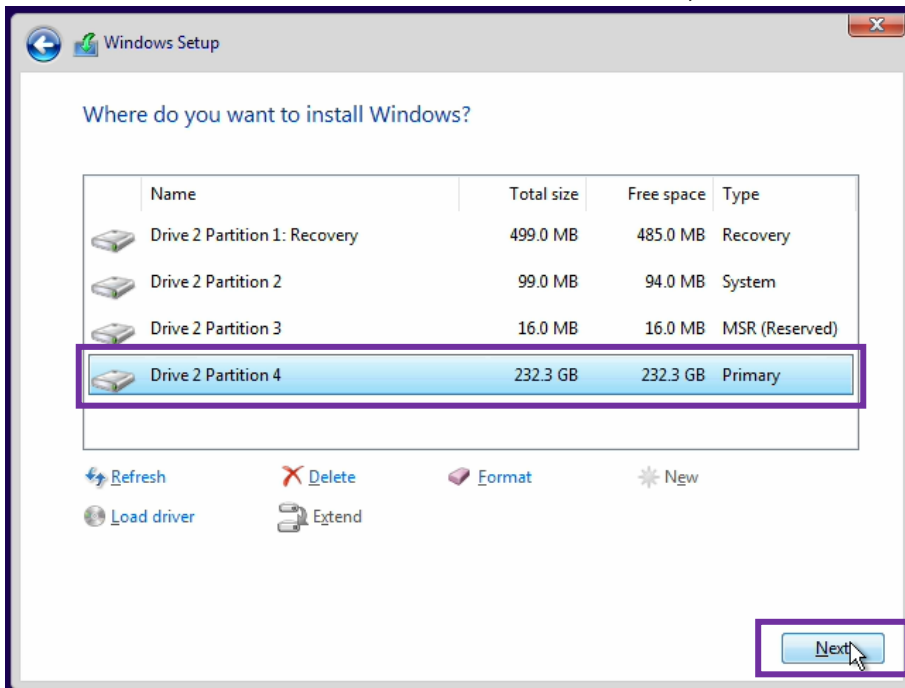
7. Browse the USB drive and select the Intel RST drivers which you have previously downloaded. Click Next to continue.



8. Select the installation destination and click “New” to partition your drive. Once decided on a partition size, click apply.  
**NOTE:** Windows installation will create necessary partitions for recovery purposes.



9. With the destination created and selected, click Next.



10. Proceed with the installation and once finished, the system will restart itself. Congratulations, you are on your way to a brand-new Windows 10 system.

